

---

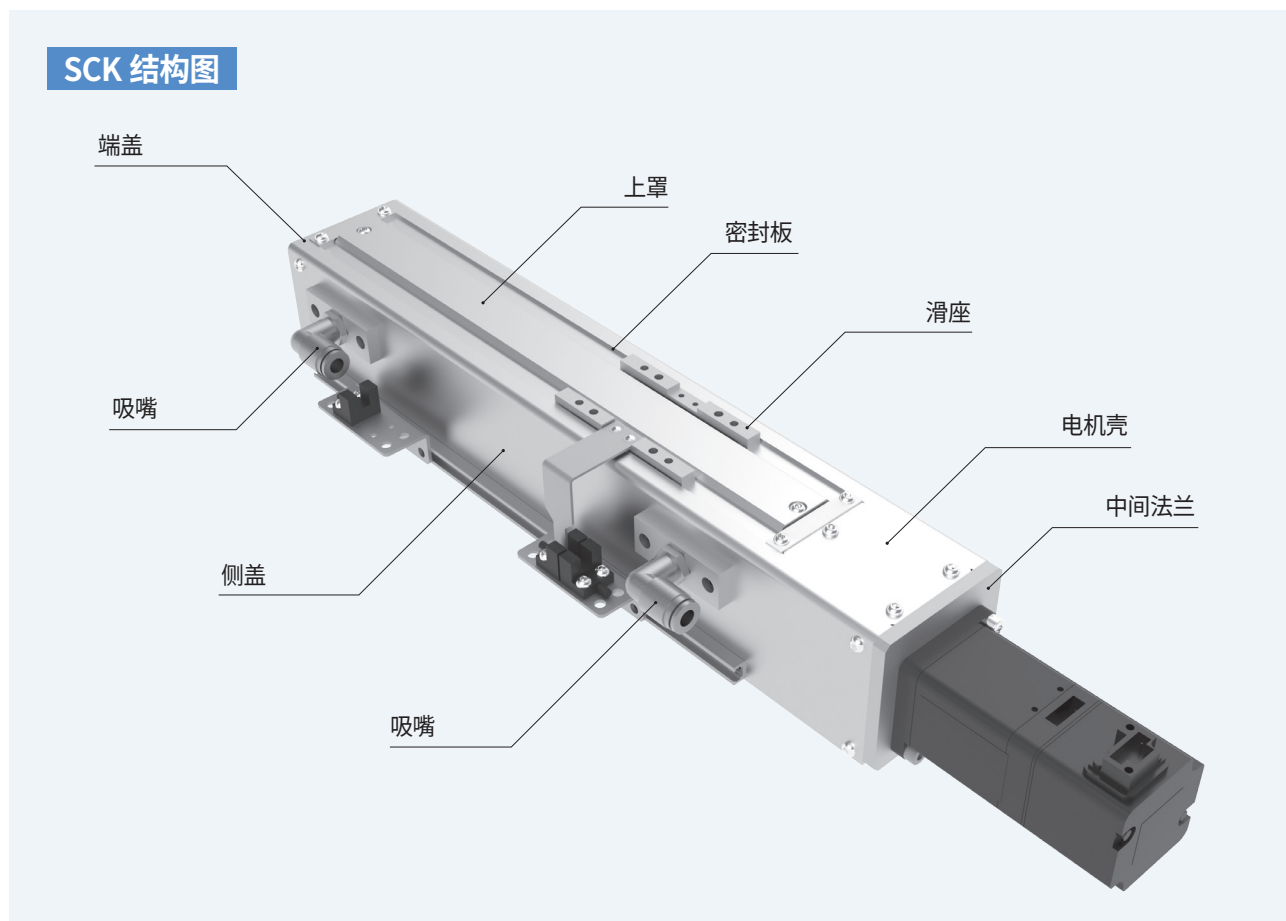
# SCK Series

The bottom left corner of the page features a decorative graphic consisting of several overlapping, semi-transparent blue geometric shapes, including triangles and quadrilaterals, creating a layered, abstract effect.

# SCK SERIES

## 直线导轨传动装置SCK

### 结构图特点



### 低振荡结构

通过THK公司独有的密封结构,达到洁净度4级标准。

### 尺寸紧凑、刚性高

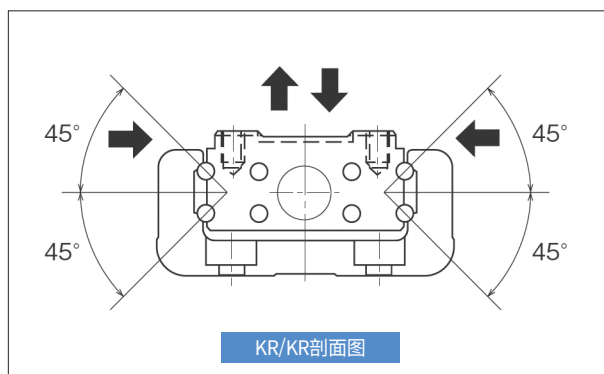
主体采用THK的SKR/KR,刚性高,尺寸紧凑。

### 耐腐蚀性高

对直线导轨和滚珠丝杠进行冷电镀处理,耐腐蚀性优异。

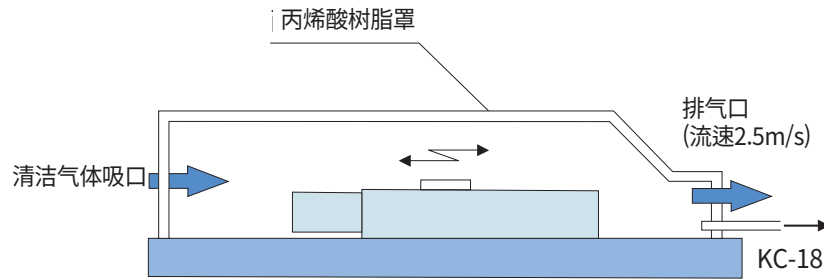
### 低振荡润滑脂

低振荡特性优异,采用无尘车间用AFF润滑脂(THK名称)。



## 辨圖識

### 测量方法(依据JIS B9926)

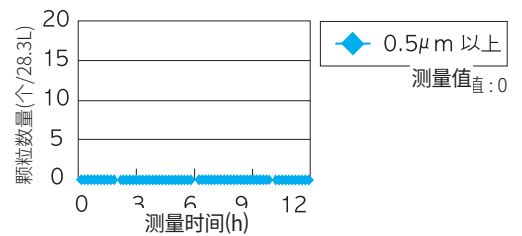
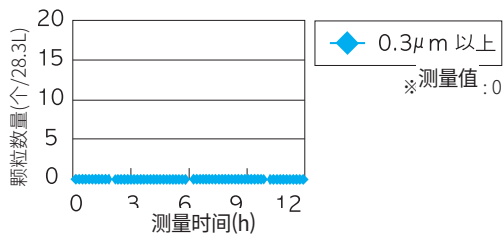
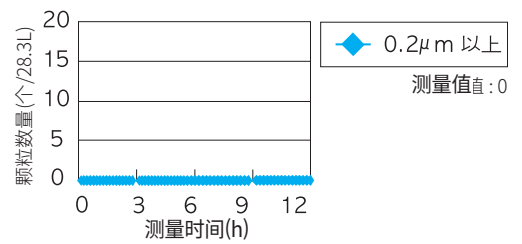
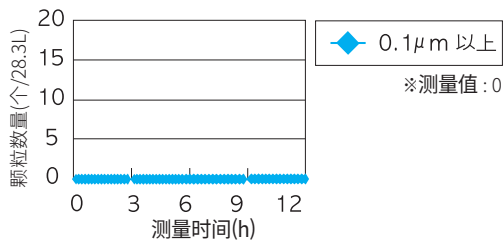


项目	内容
最高速度	30m/min 滚珠丝杠转速
加减速	4.9m/s <sup>2</sup> (0.5G)
行程	200mm
使用润滑脂	THK AFF 润滑脂
作用载荷	无

项目	内容
测量仪器	KC-18(微粒计数器)
吸入量	60L/min
测量部流速	2.5m/s
测量空气量	28.3L(0.1CF)
测量时间	566sec/次

### 振荡数据

SCK4610A 振动试验：测量12小时



### 根据JIS B9920的洁净度上限值

粒径	等级 1	等级 2	等级 3	等级 4	等级 5	等级 6
0.1 (μm 以上)	10	100	1000	10000	100000	1000000
0.2 (μm 以上)	2	24	237	2370	23700	237000
0.3 (μm 以上)	-	10	102	1020	10200	102000
0.5 (μm 以上)	-	4	35	352	3520	35200

# 牌号组成：短轴

牌号	滚珠丝杠导程	Table Type	行程
SCK20	10	A	0150
①	②	③	④
系列名称	滚珠丝杠导程	Table Type	STROKE
系列名称	01 : 1mm 02 : 2mm 06 : 6mm 10 : 10mm 20 : 20mm	A : A Type B : B Type	010 : 10mm 015 : 15mm ~ 790 : 790mm 800 : 800mm
SCK20			
SCK26			
SCK33			
SCK46			

## 传感器选项

E22R

④

是否有传感器(电线长度选项) + 传感器安装位置

制造商	选项符号	NORG(1EA)	±OT(2EA)	电线长度选项
无传感器	N	无		0 无
OMRON	E1	EE-SX674		1 1M
	<b>E2</b>	EE-SX674	EE-SX674	<b>2</b> 2M
	E3	EE-SX674A		3 3M
	E4	EE-SX674A	EE-SX674	4 4M
	E5	EE-SX671		5 5M
	E6	EE-SX671	EE-SX671	
	E7	EE-SX671A		
	E8	EE-SX671A	EE-SX671	
PANASONIC	P1	PM-Y65		
	P2	PM-Y65	PM-Y65	
	P3	PM-Y65-D		
	P4	PM-Y65-D	PM-Y65	
	P5	PM-L65		
	P6	PM-L65	PM-L65	
	P7	PM-L65-D		
	P8	PM-L65-D	PM-L65	

**传感器安装位置**

R 右侧  
L 左侧

\* 各制造商标准传感器电线长度 : 2米 : OMRON , PANASONIC

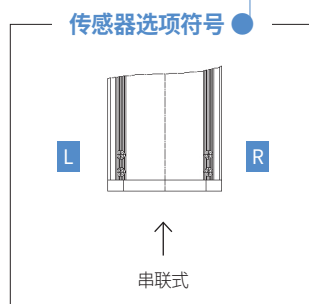
## 等级选项

MA20BS

⑤

电机法兰类型 + 电机容量及位置

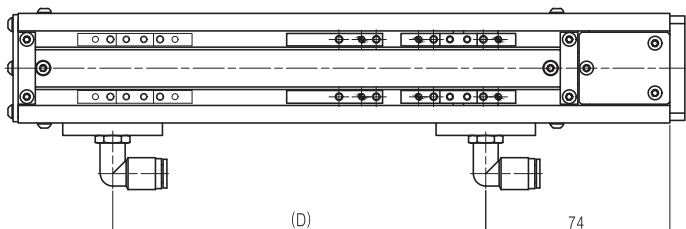
电机法兰类型	
<b>MA</b>	A 型
<b>MB</b>	B 型
+	
电机容量	
5	50W
10	100W
20	200W
40	400W
05B	50W BRAKE
10B	100W BRAKE
20B	200W BRAKE
40B	400W BRAKE



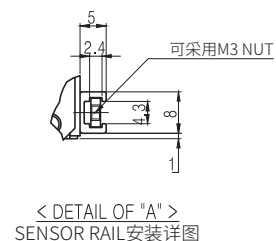
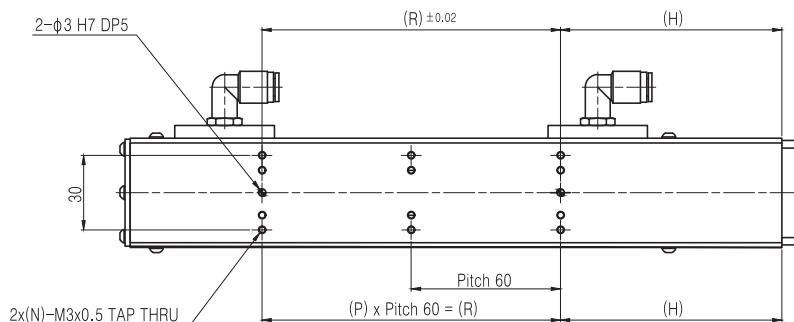
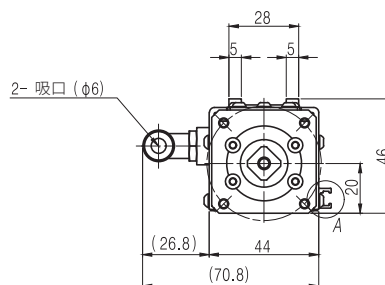
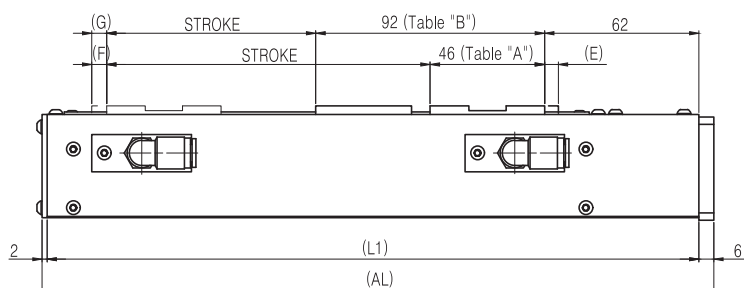
\* 选择传感器注意事项  
- 传感器位于吸口的相反方向

# SCK20

## 外形图

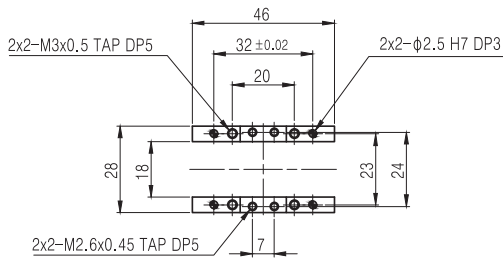


尺寸	备注
E 5.5 [mm]	从Meca stopper到行程起始位置的富裕行程。
F 6 [mm]	进行BLOCK A-Type时的End Stopper富裕行程。
G 5 [mm]	进行BLOCK B-Type时的富裕行程。

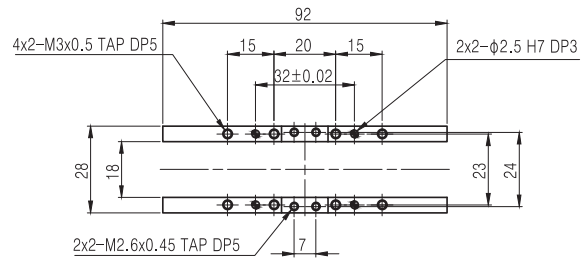


BLOCK TYPE	A-TYPE	STROKE [mm]	30	80	130
		(最大行程) [mm]	(41.5)	(91.5)	(141.5)
BLOCK TYPE	B-TYPE	STROKE [mm]	-	35	85
		(最大行程) [mm]	-	(45.5)	(95.5)
尺寸	L1 [mm]		162	212	262
	AL [mm]		170	220	270
	H [mm]		69	64	89
	P [mm]		1	2	2
	R [mm]		60	120	120
	N [mm]		2	3	3
D [mm]		50	100	150	

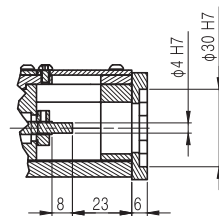
详图



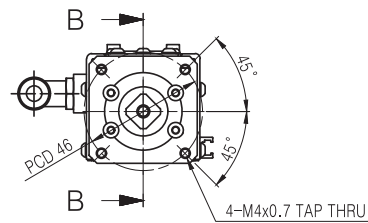
< TABLE "A"放大图 >



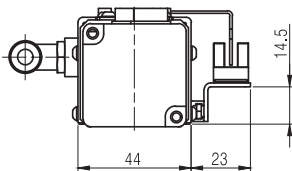
< TABLE "B"放大图 >



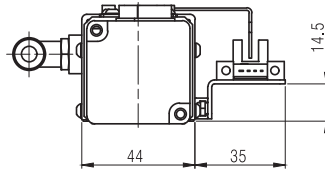
< SECTION OF "B-B" >



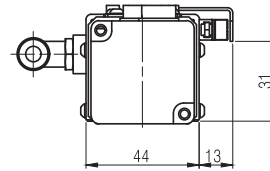
< SHAFT END & MOTOR FLANGE形状放大图 >



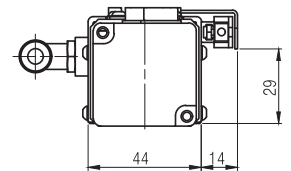
< SENSOR >  
EE-SX674 SERIES (OMRON)  
PM-Y65 (PANASONIC)



< SENSOR >  
EE-SX671 SERIES (OMRON)  
PM-L65 (PANASONIC)



< SENSOR >  
APM-D3 SERIES (AZBIL)



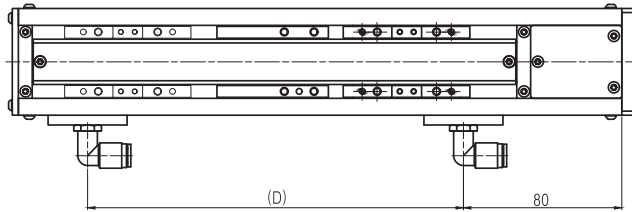
< SENSOR >  
GX-F12 SERIES (SUNX)

主体质量 [kg]	A-TYPE	1.1	1.4	1.6
	B-TYPE	-	1.6	1.8
标准电机规格 [W]			50	
最高速度 [mm/s]	1 [mm]		50	
	6 [mm]		300	
最大可搬荷载荷 [kg]	1 [mm]		水平 10, 垂直 6	
	6 [mm]		水平 10, 垂直 3	

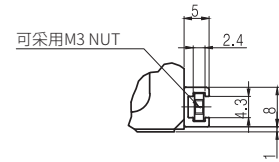
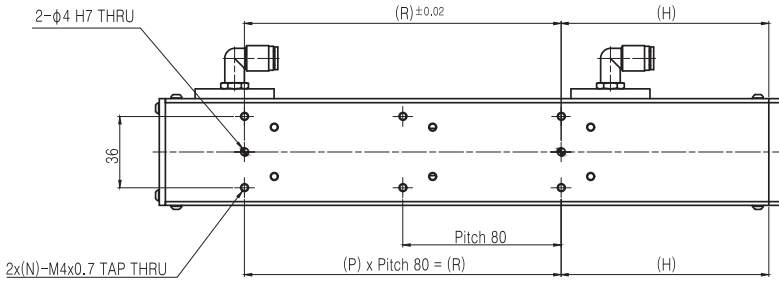
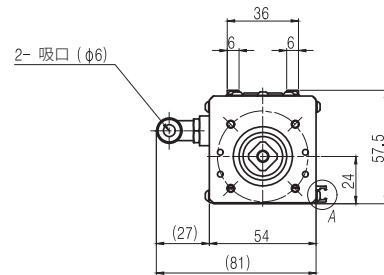
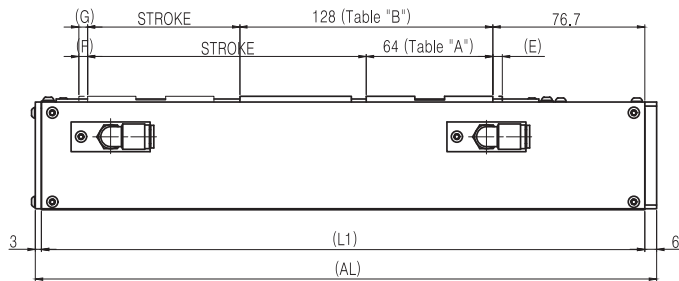
\* 最高速度受MOTOR转速(3000rpm)或滚珠丝杠允许转速的限制。

# SCK26

## 外形图



尺寸	备注
E 5.3 [mm]	从Meca stopper到行程起始位置的富裕行程。
F 5.3 [mm]	进行BLOCK A-Type时的End Stopper富裕行程。
G 5.3 [mm]	进行BLOCK B-Type时的富裕行程。

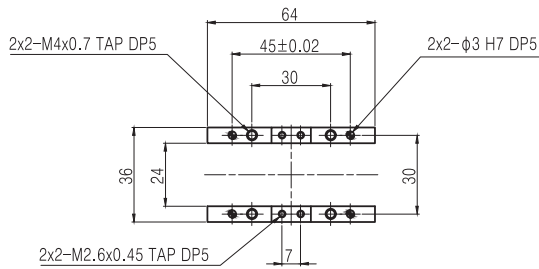


< DETAIL OF "A" >  
SENSOR RAIL 安装详图

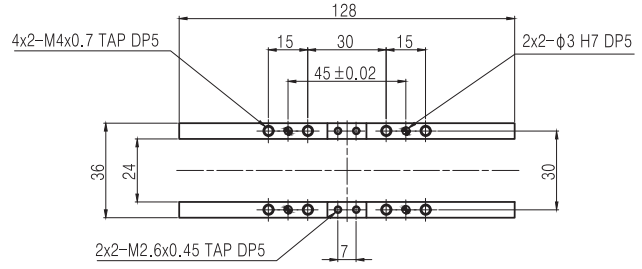
BLOCK TYPE	A-TYPE	STROKE [mm]	60	110	160	210
		(最大行程) [mm]	(69)	(119)	(169)	(219)
BLOCK TYPE	B-TYPE	STROKE [mm]	-	45	95	145
		(最大行程) [mm]	-	(55)	(105)	(155)
尺寸	L1 [mm]		224	274	324	374
	AL [mm]		233	283	333	383
	H [mm]		110	95	120	105
	P [mm]		1	2	2	3
	R [mm]		80	160	160	240
	N [mm]		2	3	3	4
	D [mm]		100	150	200	250



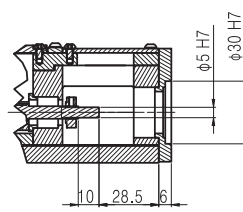
详图



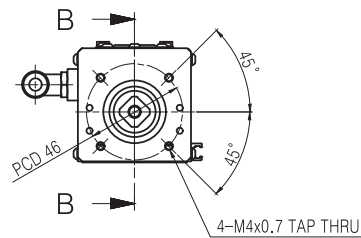
< TABLE "A"放大图 >



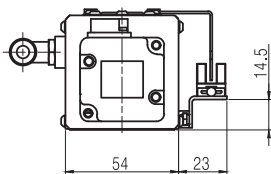
< TABLE "B"放大图 >



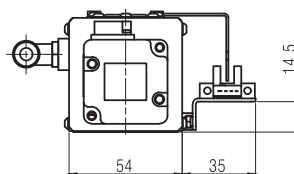
< SECTION OF "B-B" >



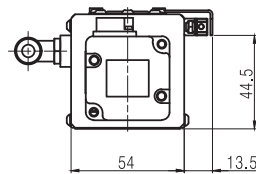
< SHAFT END & MOTOR FLANGE形状放大图 >



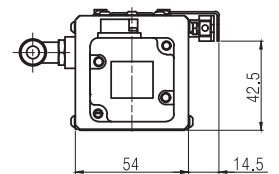
< SENSOR >  
EE-SX674 SERIES (OMRON)  
PM-Y65 (PANASONIC)



< SENSOR >  
EE-SX671 SERIES (OMRON)  
PM-L65 (PANASONIC)



< SENSOR >  
APM-D3 SERIES (AZBIL)



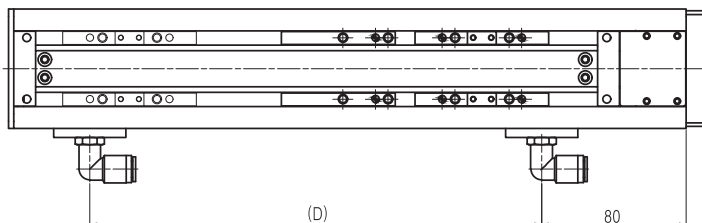
< SENSOR >  
GX-F12 SERIES (SUNX)

主体质量 [kg]	A-TYPE	1.8	2.1	2.4	2.7
	B-TYPE	-	2.6	2.9	3.2
标准电机规格 [W]		50			
最高速度 [mm/s]	1 [mm]	100			
	6 [mm]	300			
最大可搬荷载荷 [kg]	1 [mm]	水平 22, 垂直 14			
	6 [mm]	水平 22, 垂直 7			

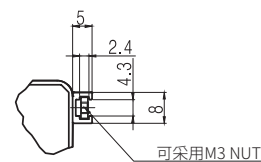
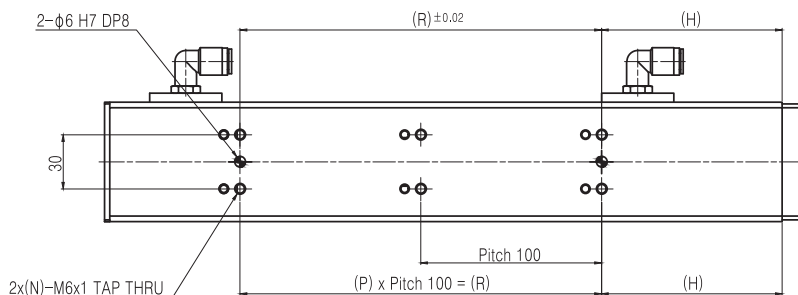
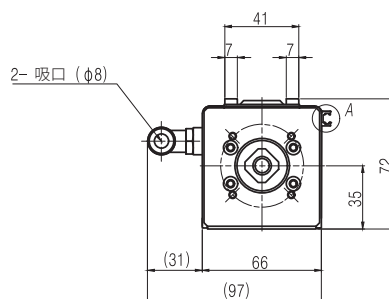
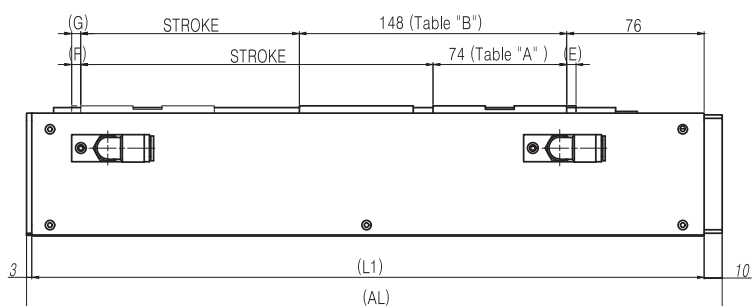
\* 最高速度受MOTOR转速(3000rpm)或滚珠丝杠允许转速的限制。

# SCK33

## 外形图



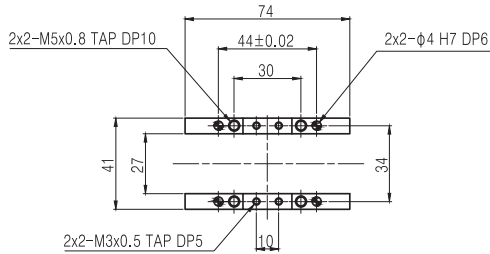
尺寸	备注
E 5 [mm]	从Meca stopper 到行程起始位置的富裕行程。
F 5 [mm]	进行BLOCK A-Type 时的End Stopper富裕行程。
G 4 [mm]	进行BLOCK B-Type 时的富裕行程。



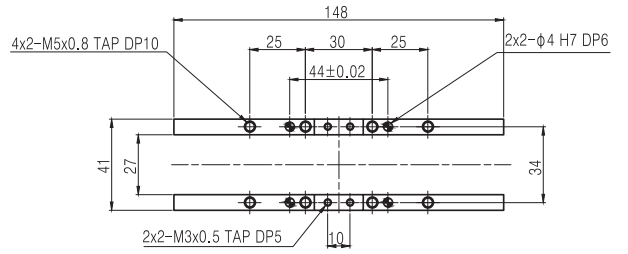
< DETAIL OF "A" >  
SENSOR RAIL安装详图

BLOCK TYPE	A-TYPE	STROKE [mm]	45	95	195	295	395	495	595
		(最大行程) [mm]	(55)	(105)	(205)	(305)	(405)	(505)	(605)
BLOCK TYPE	B-TYPE	STROKE [mm]	-	-	120	220	320	420	520
		(最大行程) [mm]	-	-	(129)	(229)	(329)	(429)	(529)
尺寸	L1 [mm]		222	272	372	472	572	672	772
	AL [mm]		235	285	385	485	585	685	785
	H [mm]		75	100	100	100	100	100	100
	P [mm]		1	1	2	3	4	5	6
	R [mm]		100	100	200	300	400	500	600
	N [mm]		2	2	3	4	5	6	7
D [mm]		120	170	270	370	470	570	670	

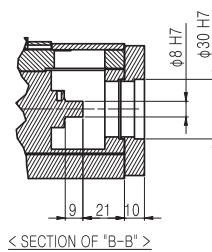
详图



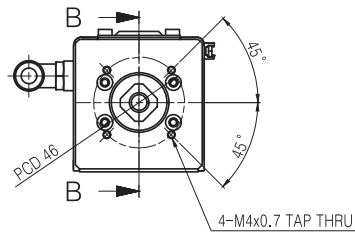
< TABLE "A"放大图 >



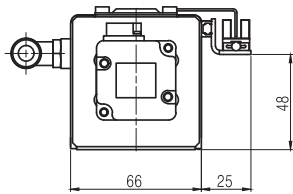
< TABLE "B"放大图 >



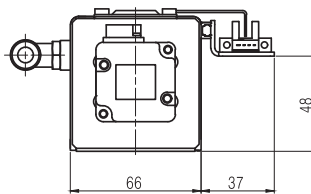
< SECTION OF "B-B" >



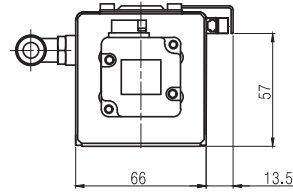
< SHAFT END & MOTOR FLANGE形状放大图 >



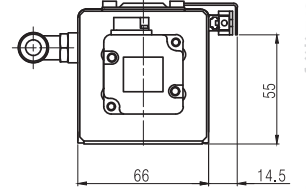
< SENSOR >  
EE-SX674 SERIES (OMRON)  
PM-Y65 (PANASONIC)



< SENSOR >  
EE-SX671 SERIES (OMRON)  
PM-L65 (PANASONIC)



< SENSOR >  
APM-D3 SERIES (AZBIL)



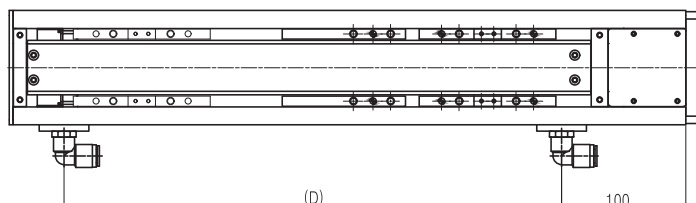
< SENSOR >  
GX-F12 SERIES (SUNX)

主体质量 [kg]	A-TYPE	3.5	4.2	4.9	5.9	7.1	7.9	9.1
	B-TYPE	-	-	5.8	6.8	7.9	8.8	10.1
标准电机规格 [W]		100						
最高速度 [mm/s]	6 [mm]	300						
	10 [mm]	500						
	20 [mm]	1000						
最大可搬载荷 [kg]	6 [mm]	水平 35, 垂直 19						
	10 [mm]	水平 30, 垂直 12						
	20 [mm]	水平 24, 垂直 6						

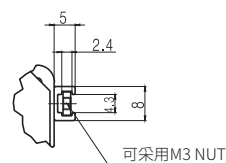
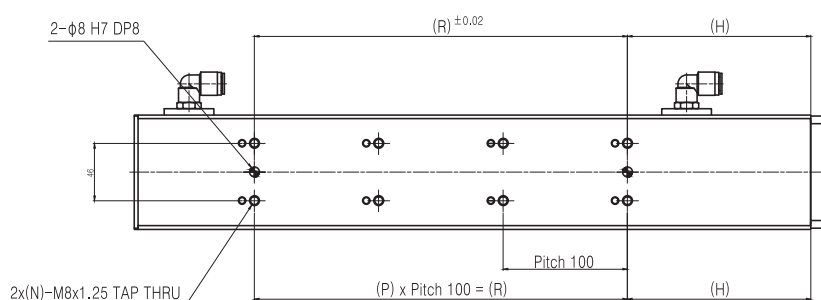
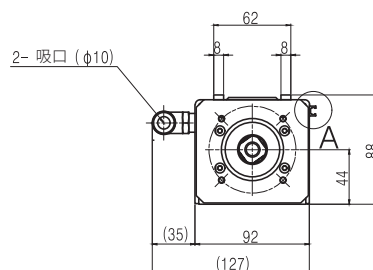
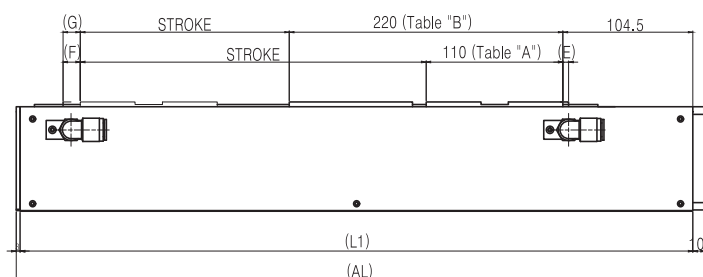
\* 最高速度受MOTOR转速(3000rpm)或滚珠丝杠允许转速的限制。

# SCK46

## 外形图



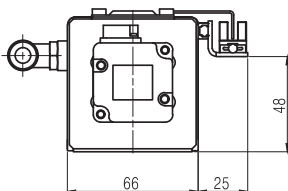
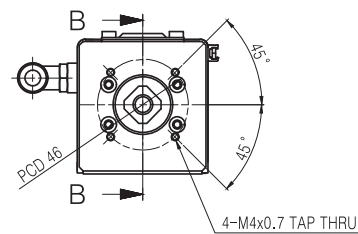
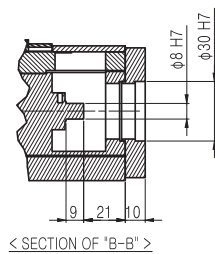
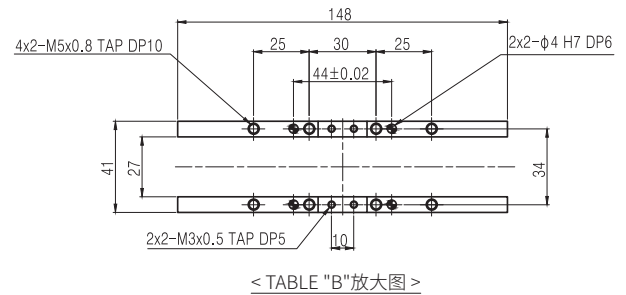
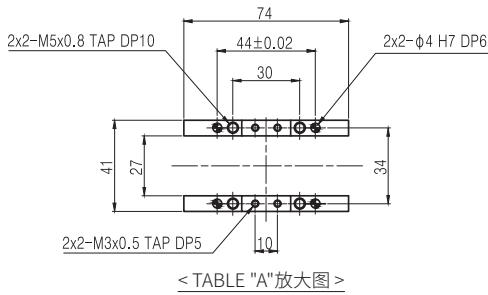
	尺寸	备注
E	4.5 [mm]	从Meca stopper到行程起始位置的富裕行程。
F	14 [mm]	进行BLOCK A-Type时的End Stopper富裕行程。
G	14 [mm]	进行BLOCK B-Type时的富裕行程。



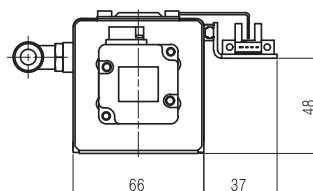
< DETAIL OF "A" >  
SENSOR RAIL安装详图

BLOCK TYPE	A-TYPE	STROKE [mm]	190	290	390	490	590	690	790
		(最大行程) [mm]	(208.5)	(308.5)	(408.5)	(508.5)	(608.5)	(708.5)	(808.5)
BLOCK TYPE	B-TYPE	STROKE [mm]	80	180	280	380	480	580	680
		(最大行程) [mm]	(98.5)	(198.5)	(298.5)	(398.5)	(498.5)	(598.5)	(698.5)
尺寸	L1 [mm]	441	541	641	741	841	941	1041	
	AL [mm]	454	554	654	754	854	954	1054	
	H [mm]	147.5	147.5	147.5	147.5	147.5	147.5	147.5	
	P [mm]	2	3	4	5	6	7	8	
	R [mm]	200	300	400	500	600	700	800	
	N [mm]	3	4	5	6	7	8	9	
	D [mm]	303	403	503	603	703	803	903	

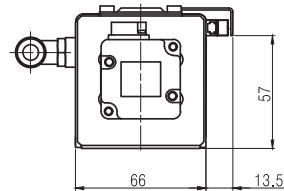
详图



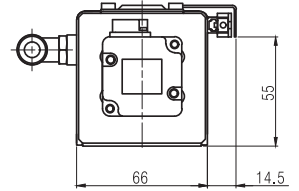
< SENSOR >  
EE-SX674 SERIES (OMRON)  
PM-Y65 (PANASONIC)



< SENSOR >  
EE-SX671 SERIES (OMRON)  
PM-L65 (PANASONIC)



< SENSOR >  
APM-D3 SERIES (AZBIL)



< SENSOR >  
GX-F12 SERIES (SUNX)

主体质量 [kg]	A-TYPE	12.1	13.9	15.7	17.5	19.2	21.1	22.7
	B-TYPE	14.7	16.5	18.3	20.1	21.8	23.5	25.2
标准电机规格 [W]		200,400						
最高速度 [mm/s]	6 [mm]	500						430
	10 [mm]	1000						840
	20 [mm]	水平 77, 垂直 18						
最大可搬运载荷 [kg]	6 [mm]	水平 51, 垂直 8						
	10 [mm]	水平 105, 垂直 36						
	20 [mm]	水平 72, 垂直 18						

\* 最高速度受MOTOR转速(3000rpm)或滚珠丝杠允许转速的限制。